

Transon CNC Fiber Laser Marking Machine



Cabinet model black/white with PC



mini model



super mini model

Fiber laser marking machine can be used for marking logo ,serial number, bar code and other beautiful patterns on any metallic materials such as stainless steel, titanium, brass, gold, silver, aluminum and lots of engineering plastic products such as mobile cover & charger, consume electronics housing etc.

It can also mark on some nonmetal material like ABS, plastic,coating material,leather,etc.

If you not sure your material, send to us, we can help test and send you test video, photos free!

Parameters:

Model	TSF-20/TSF-30/TSF-50/TSF-100
Laser type	Fiber Laser
Laser power	Raycus 20W/30W/50W/100W,100,000 hours life span
Beam quality	M2< 1.5
Laser wavelength	1064±1 nm
Power adjustment range	10~100%
Frequency of pulse	20~250KHz
Power supply	220V/50Hz /8A (110V/60Hz /15A can choose)
Cooling system	Air Cooling
Graphic format supported	Bitmap: BMP,JPG,JPEG,GIF,TGA,PNG,TIF,TIFF
	Vector: AI, PLT,DXF,DST,SVG,JPC,NC,G,BOT,GBR
Working area	Standard 110mm*110 mm(150*150,200*200,300*300mm optional)
Marking depth	<1mm
Marking speed	<7000mm/s
Min. line width	0.05mm
Repeatability accuracy	0.003mm
Power Machine	300W-450W
Operation temperature	0~40°C
Operation system	Microsoft Windows 7, 8, 10 system
Operating environment	Clean and free of dust
Warranty	Three years

Below samples are marked by our 20W model, with 110x110mm field lens

1. Flower material: aluminum, size: 34mm*34mm, mark depth 2mm, time used 2 hours.



2. Following aluminum size: 200x45x8mm



More sample below for reference:



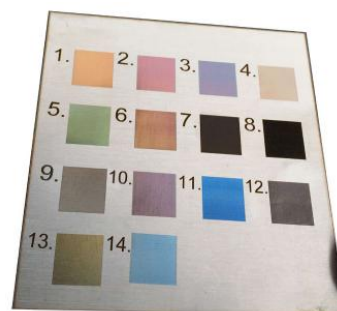
Brass cut and mark



Silver cut and mark



Alumina marked model



MOPA Stainless steel colorful mark



Mark photo on stainless steel



on anodized aluminum



pet tag mark



0.8mm thickness silver cut



tooth model marked



phone charger mark



3D mark samples:

